

DOTC of Lynchburg
All-breed Agility Trials

June 29 – July 1, 2018



Boonsboro Ruritan Club Property
1499 Coffee Rd., Lynchburg, VA 24503

SET-UP - Thursday, June 28th

Exhibitors may setup shade tents ringside on Thursday afternoon after the ring fences are in place and the reserved areas have been marked with orange tape (perhaps by 4 pm). If you setup before that time, you may be asked to move.

JUDGE (all classes/all days)

Michele Fletcher #90966
12080 Old St Hwy 28, Pikeville, TN 37367

TRIAL SITE HOURS 7:00 am to 7:00 pm all days

FRIDAY – Judging starts at 10 AM
EXC/MAS FAST, Open Fast, Novice FAST in Ring 1 Followed by EXC/MAS JWW in Ring 2; followed by EXC/MAS STD in Ring 1; T2B in Ring 1
SATURDAY – Judging starts at 8:30 AM
Time 2 Beat in Ring 1 followed by EXC/MAS JWW (R2); EXC/MAS STD (R1); Open JWW (R2); Open STD (R1); Nov JWW (R2); Nov STD (R1)
SUNDAY – Judging starts at 8:30 AM
Time 2 Beat in Ring 1 followed by EXC/MAS JWW (R2); EXC/MAS STD (R1); Open JWW (R2); Open STD (R1); Nov JWW (R2); Nov STD (R1)
Judge's Briefing will start 20 minutes before start of judging. Heights will run from LOW to HIGH (4" to 24C") in all classes all days.

WALKTHRUS

For EX/MAS STD and EX/MAS JWW

4" – 16" Walk - Run

20" – 24" Walk - Run

NOTE: OPN & NOV FAST will Brief & walk together but run separately. Walk Combined
OPN & NOV FAST -> Run All OPN FAST -> Run
All NOV FAST.

EX/MAS FAST will walk-run by itself.

Walkthru Groups will be clearly marked on the Gate Boards

VETERINARIAN ON CALL

Animal Emergency and Critical Care

3432 Odd Fellows Rd, Lynchburg, VA 24501
434-846-1504

CHECK-IN and MEASURING

WE ARE SCHEDULED TO HAVE MULTIPLE VMOS at this trial. All dogs needing to be measured must be measured PRIOR to running by a VMO, Measurements will take place before each class. Please allow sufficient time before your dog's run to be measured.

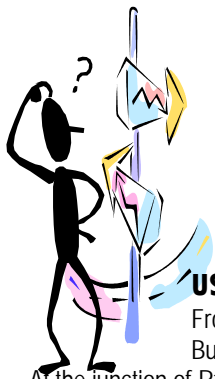
We will not be using Armband labels at these trials. However, you will need to know your Armband number in order to do an At Trial move-up. Please bring a printed or an electronic copy of your trial confirmation so you will have your armband number with you.

MOVE-UPS

Move ups must be sent in writing (E-mail is acceptable and preferred) to the Trial Secretary for the June 29th trial no later than Monday, June 25th at 6pm. Please preface all correspondence with "DOTC " in the Subject line. **Day to Day Move ups will be accepted but must be submitted in writing to the trial secretary no later than 15 minutes after the last run is judged for each class (STD & JWW).**

ADDITIONAL SITE INFORMATION

- Indoor crating space is available in our large climate controlled building. Indoor restrooms are available. Crates and shade tents may be left overnight; however, DOTC and the Boonsboro Ruritan Club will not be responsible for any lost or damaged items left at the show site. Building will reopen at 7 AM on Saturday and Sunday.
- Wading pools and misting fans will be available
- Exhibitors are responsible for cleaning up after their dog(s) at the trial site and at the motels. Any exhibitor failing to do so may be excused without benefit of refund if the Trial Committee deems the exhibitor to be in violation of this requirement. Cleaning supplies and disposal sites will be available at various locations around the show grounds.



DIRECTIONS TO THE SITE

Boonsboro Ruritan Club Property

1499 Coffee Road, Lynchburg VA 24503

Note: In general, follow the signs to Rt 501 North!

US 460 - From the West of Lynchburg:

From 460, take the right-hand exit to 460 E Business (Timberlake Rd). Go about 3 miles.

At the junction of Rt 501, exit to the right and follow 501 North for about 2 miles to a traffic light at Rt 221. *Continue straight on Rt 501 N through the light at Rt 221. At the next light, turn left to stay on Rt 501 North, "NorthWest Expressway". At the next light at Boonsboro Rd, turn left (still 501 N) and go about 2 miles. Turn left onto Coffee Road (Rt 644) and go about 2 miles. The Boonsboro Ruritan Club Building is on your right.*

US 460 - From the East of Lynchburg: Exit Rt 460 at Candler's Mountain Rd (a right turn exit). Follow signs to Rt 501 North (River Ridge Mall will be on your left, and La Quinta will be on your right). Take the exit ramp to the right to Rt 501 North/Rt 29. Follow 501 N for about 3 miles to Lakeside Dr, Rt 221. See *italics above*.

US 29 - From the North of Lynchburg:

After passing the town of Amherst, stay on Route 29 South. (Do not take Business Rt. 29 South). This is the limited-access Madison Heights Bypass. After crossing the James River, Rt. 29 will join Rt. 460 West. DO NOT take Rt. 501 North Business at Campbell Ave.

Continue to Candler's Mountain Rd and follow signs for Rt. 501 North. (River Ridge Mall is on the left, and La Quinta Inn on the right). Take the exit ramp to the right to Rt. 501 North. Follow 501 N for about 3 miles to Lakeside Dr./Rt.221. See *italics above*.

US 29 - From the South of Lynchburg: Follow Rt 29 North into the city limits (pass River Ridge mall entrance on your right). Take the exit ramp to the right to Rt 501 North and proceed for about 3 miles to Rt 221. See *italics above*.

For a detailed map, see our web site at WWW.DOTCLynchburg.org

FOOD – Free BBQ Buffet on Saturday at the Lunch Break

Food and drink will be available at the trial site, provided by DOTC. All exhibitors and volunteer workers on Saturday will get a free BBQ buffet for lunch. Volunteer workers on Friday and Sunday will receive DOTC Dollars that can be spent at the food concession or used as partial payment for entry fee at any future DOTC agility event, excluding DOTC/Star City combined trials in January at Lexington.

*** **Extra lunches** ***

Please make reservation with Judy at jmotrel@jetbroadband.com with your choice of Pork BBQ or vegetarian. Pay at trial.

Safe travels and see you at the trial!

Laurene and Jenn Galgano
GoneDoggin' Agility
PO Box 3070, Virginia Beach, VA 23454

E-mail: GoneDoggin@cox.net

Home: (757) 481-4854

Cell: (757) 581-1674

(for weekend of trial only)

www.GoneDogginAgility.com

VOLUNTEERS

We are relying on our agility exhibitors to help us make our trial a success. Please be generous with your time and expertise. We will make sure that your duties do not interfere with your running your dog. You will get a full walk-through to plan your strategy!

The worker sign-up link is live at: <https://goo.gl/7rysBG>

Exhibitors who sign up to help will receive DOTC dollars (for lunch or future entries excluding DOTC/Star City trials) and will also receive tickets for the worker raffle.

Please contact Judy Smotrel with any questions on volunteering.

Judy Smotrel: jmotrel@jetbroadband.com

This is a preliminary judging schedule which is contingent upon the move-up of entries that may not have been received yet.

Trial Data as of June 13, 2018

Please remember that the Trial Schedules are only an Estimate

(All times are approximate)

Friday, June 29									total runs 211	
STANDARD	4"	8"	12"	16"	20"	24"	24C"	Total		
EX/MAS	1	11	17	12	15	11	0	67		
JUMPERS	4"	8"	12"	16"	20"	24"	24C"	Total		
EX/MAS	1	10	16	14	14	12	0	67		
FAST	4"	8"	12"	16"	20"	24"	24C"	Total		
NOVICE	0	4	2	4	3	1	0	14		
OPEN	0	1	0	2	3	1	0	7		
EX/MAS	0	4	8	6	5	4	0	27		
T2B	4"	8"	12"	16"	20"	24"	24C"	Total		
REG & PREF	1	5	6	6	7	4	0	29		

FRIDAY June 29	Start Time	# of Dogs
EX/MAS FAST Briefing / Walk	9:40 AM	27
FAST EXC Run All	10:00 AM	
OPEN & NOV FAST Briefing / Walk	10:25 AM	7
FAST OPN Run All	10:40 AM	
FAST NOV Run All	10:47 AM	14
EX/MAS JWW Course Build	11:01 AM	41
JWW Ex/MAS Briefing All Heights followed by 4"-16" Walkthru	11:16 AM	
JWW Ex/MAS Run 4" - 16"	11:31 AM	
JWW Ex/MAS 20" - 24" Walk	12:08 PM	25
JWW Ex/MAS 20" - 24" Run	12:23 PM	
EX/MAS STD Course Build	12:45 PM	41
STD Ex/MAS Briefing All Heights followed by 4" - 16" Walkthru	1:00 PM	
STD Ex/MAS Run 4" - 16"	1:15 PM	
STD Ex/MAS 20" - 24" Walk	2:03 PM	26
STD Ex/MAS 20" - 24" Run	2:18 PM	
T2B COURSE CHANGE	2:47 PM	29
T2B BRIEFING/WALKTHRU	3:02 PM	
T2B Run ALL	3:17 PM	
END OF LAST CLASS	3:45 PM	

SATURDAY June 30	Start Time	# of Dogs
T2B BRIEFING/WALKTHRU	8:10 AM	49
T2B Run ALL	8:30 AM	
JWW Ex/MAS Briefing All Heights followed by 4"-16" Walkthru	9:18 AM	46
JWW Ex/MAS Run 4" - 16"	9:33 AM	
JWW Ex/MAS 20" - 24" Walk	10:15 AM	31
JWW Ex/MAS 20" - 24" Run	10:30 AM	
EX/MAS STD Course Build	10:57 AM	46
STD Ex/MAS Briefing All Heights followed by 4" - 16" Walkthru	11:12 AM	
STD Ex/MAS Run 4" - 16"	11:27 AM	
LUNCH	12:21 PM	33
STD Ex/MAS 20" - 24" Walk	12:51 PM	
STD Ex/MAS 20" - 24" Run	1:06 PM	
Open JWW Course Build	1:43 PM	14
Open JWW Briefing/Walkthru	1:58 PM	
Open JWW Run All	2:13 PM	13
Open STD Course Build	2:27 PM	
Open STD Briefing/Walkthru	2:42 PM	
Open STD Run All	2:57 PM	17
Nov JWW Course Build	3:17 PM	
Nov JWW Briefing/Walkthru	3:32 PM	17
Nov JWW Run All	3:47 PM	
Nov STD Course Build	4:04 PM	17
Nov STD Briefing/Walkthru	4:19 PM	
Nov STD Run All	4:34 PM	
END OF LAST CLASS	4:59 PM	

Saturday, June 30									total runs 266	
STANDARD	4"	8"	12"	16"	20"	24"	24C"	Total		
NOVICE	0	2	1	4	6	4	0	17		
OPEN	1	2	3	4	3	0	0	13		
EX/MAS	1	12	21	12	23	9	1	79		
JUMPERS	4"	8"	12"	16"	20"	24"	24C"	Total		
NOVICE	0	3	3	4	4	3	0	17		
OPEN	0	2	3	2	6	1	0	14		
EX/MAS	2	11	19	14	21	9	1	77		
T2B	4"	8"	12"	16"	20"	24"	24C"	Total		
REG & PREF	1	7	10	11	15	4	1	49		

Sunday, July 1 total runs 189								
STANDARD	4"	8"	12"	16"	20"	24"	24C"	Total
NOVICE	0	2	0	4	4	2	0	12
OPEN	1	2	1	3	3	0	0	10
EX/MAS	1	7	16	11	16	6	0	57
JUMPERS	4"	8"	12"	16"	20"	24"	24C"	Total
NOVICE	0	3	0	4	4	1	0	12
OPEN	0	1	2	2	3	1	0	9
EX/MAS	2	7	15	12	15	6	0	57
T2B	4"	8"	12"	16"	20"	24"	24C"	Total
REG & PREF	1	2	8	9	9	3	0	32

SUNDAY July 1	Start Time	# of Dogs
CLASS/DIVISION		
T2B BRIEFING/WALKTHRU	8:10 AM	32
T2B Run ALL	8:30 AM	
EX/MAS JWW Course Build	9:02 AM	
JWW Ex/MAS Briefing All Heights followed by 4"-16" Walkthru	9:17 AM	36
JWW Ex/MAS Run 4" – 16"	9:32 AM	
JWW Ex/MAS 20" – 24" Walk	10:05 AM	21
JWW Ex/MAS 20" – 24" Run	10:20 AM	
EX/MAS STD Course Build	10:39 AM	
STD Ex/MAS Briefing All Heights followed by 4" – 16" Walkthru	10:54 AM	35
STD Ex/MAS Run 4" – 16"	11:09 AM	
STD Ex/MAS 20" – 24" Walk	11:50 AM	22
STD Ex/MAS 20" – 24" Run	12:05 PM	
Open JWW Course Build	12:30 PM	
Open JWW Briefing/Walkthru	12:45 PM	9
Open JWW Run All	1:00 PM	
Open STD Course Build	1:09 PM	
Open STD Briefing/Walkthru	1:24 PM	10
Open STD Run All	1:39 PM	
Nov JWW Course Build	1:54 PM	
Nov JWW Briefing/Walkthru	2:09 PM	12
Nov JWW Run All	2:24 PM	
Nov STD Course Build	2:36 PM	
Nov STD Briefing/Walkthru	2:51 PM	12
Nov STD Run All	3:06 PM	
END OF LAST CLASS	3:24 PM	

Please remember that the Trial Schedules are only an Estimate

(All times are approximate)